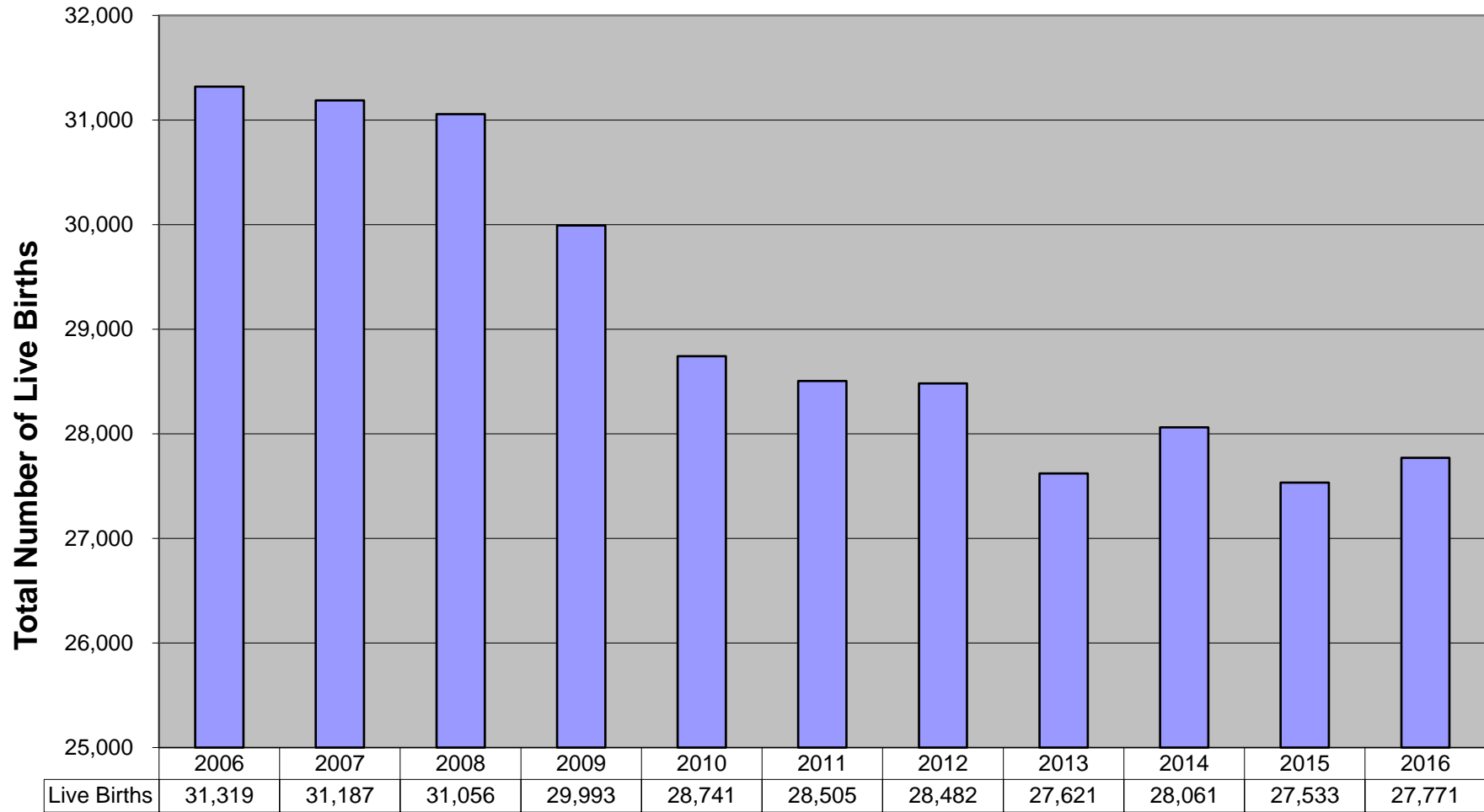
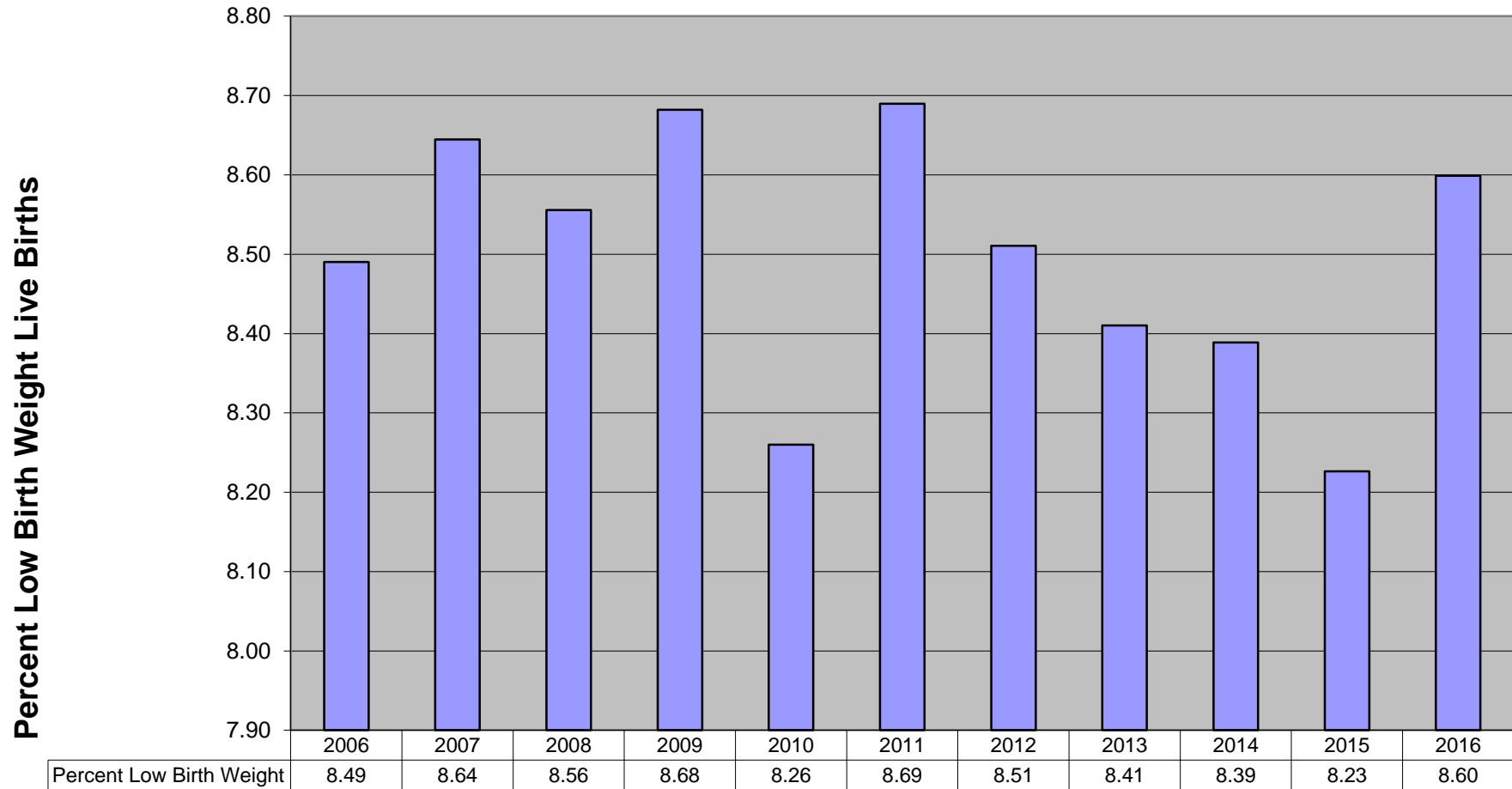


**TOTAL REGIONAL LIVE BIRTHS
2006-2016**
Regional Perinatal Database
Cincinnati Children's Perinatal Outreach Program



**PERCENT LOW BIRTH WEIGHT (<2500 grams) OF LIVE BIRTHS
2006-2016**

**Regional Perinatal Database
Cincinnati Children's Perinatal Outreach Program**

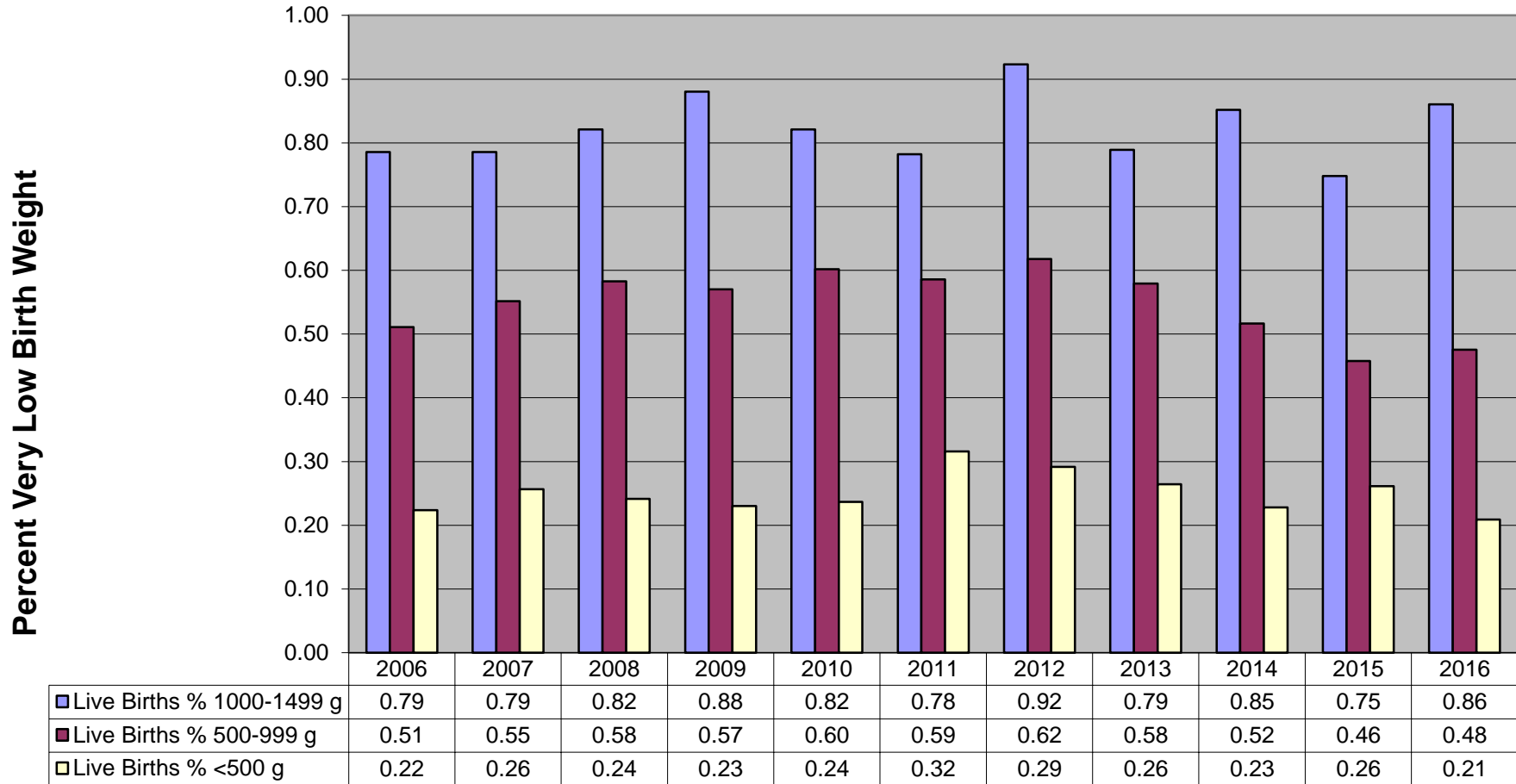


Percent Low Birth Weight = (Total Number of Low Birth Weight Births / Total number of Live Births) x 100



**PERCENT VERY LOW BIRTH WEIGHT (<1500 grams) of LIVE BIRTHS
2006-2016**

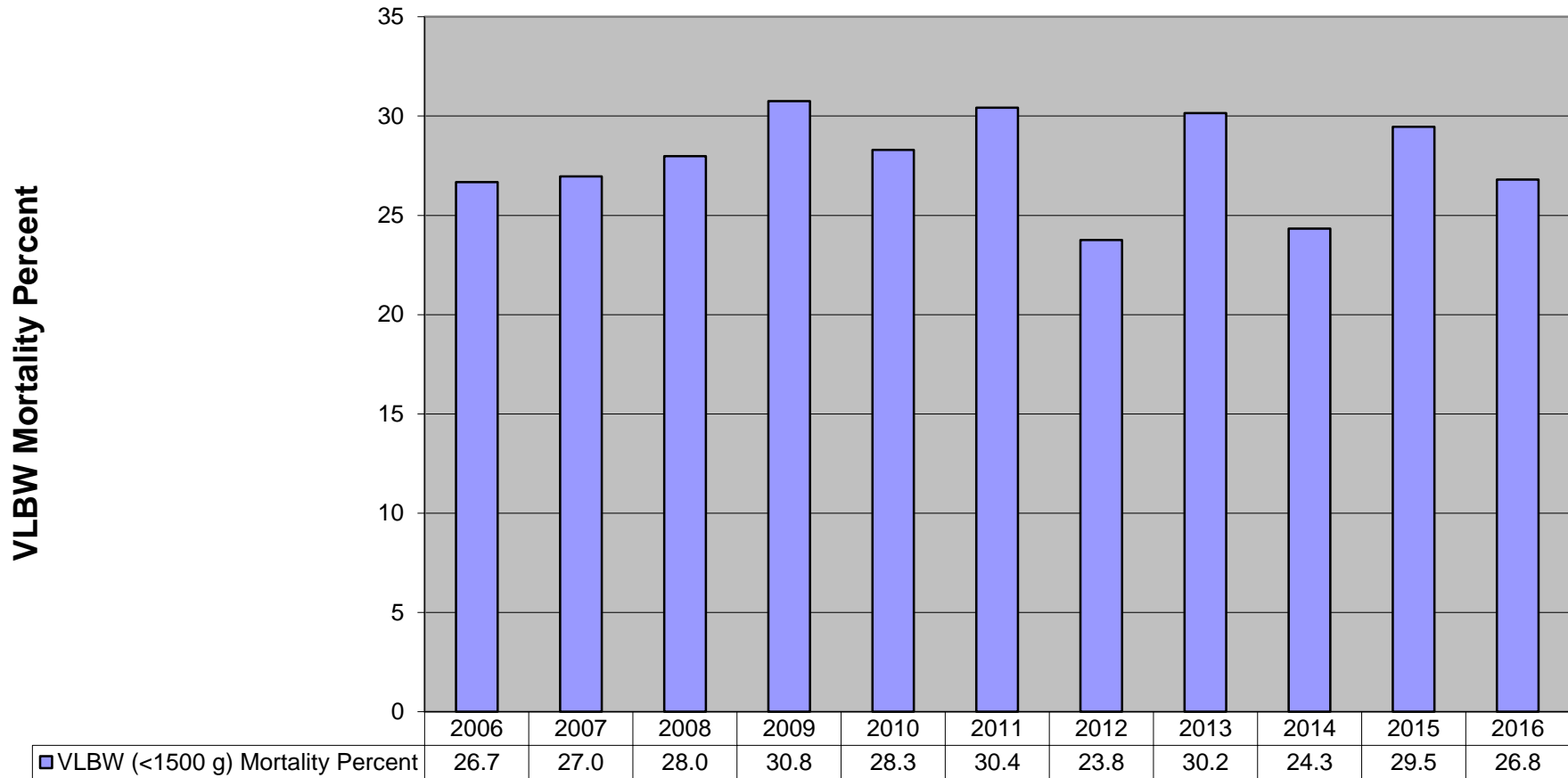
**Regional Perinatal Database
Cincinnati Children's Perinatal Outreach Program**



Percent Very Low Birth Weight = (Total Number Very Low Birth Weight / Total Number Live Births) x 100

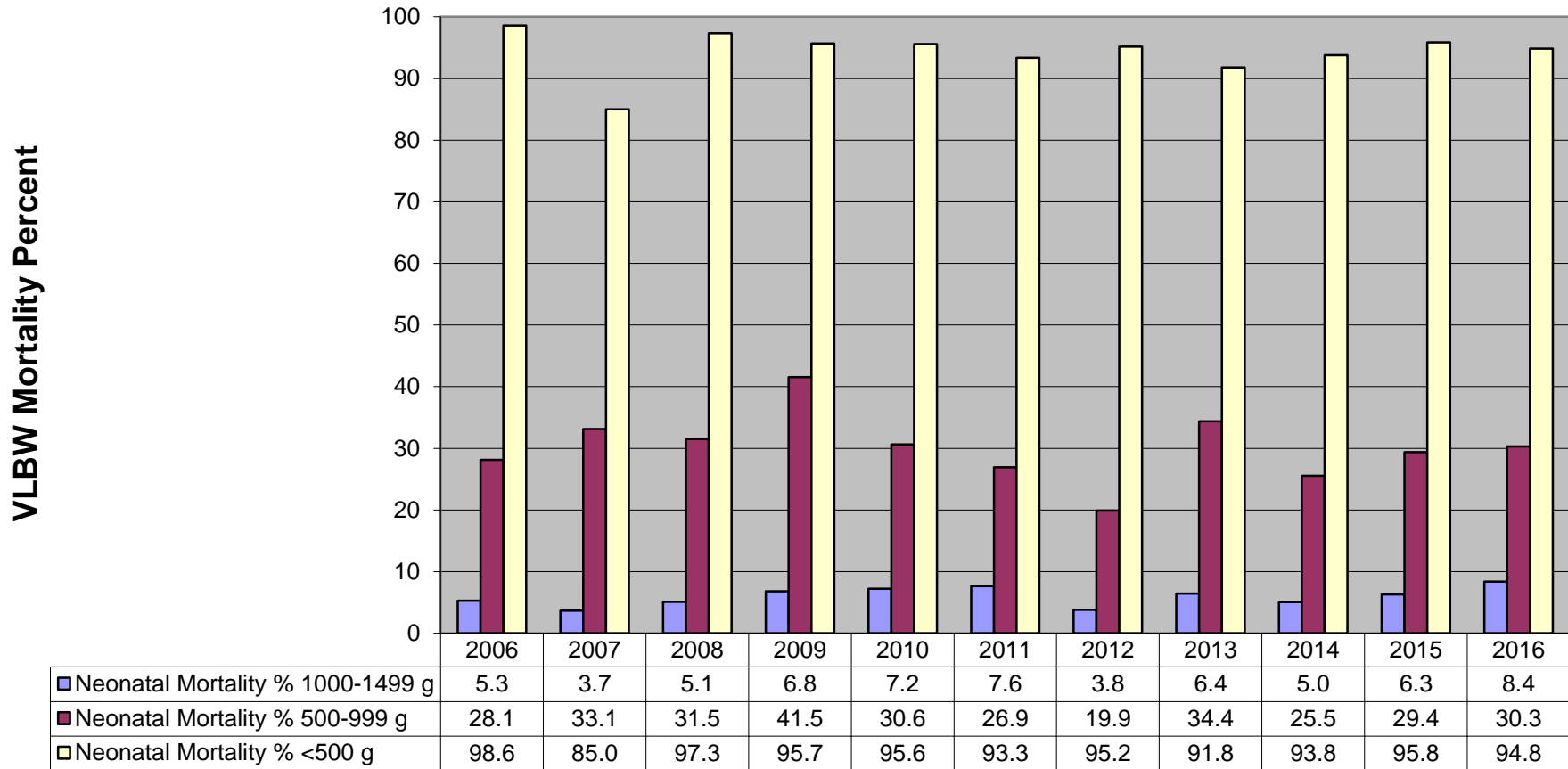
**VERY LOW BIRTH WEIGHT (<1500 grams) NEONATAL MORTALITY PERCENT
2006-2016**

**Regional Perinatal Database
Cincinnati Children's Perinatal Outreach Program**



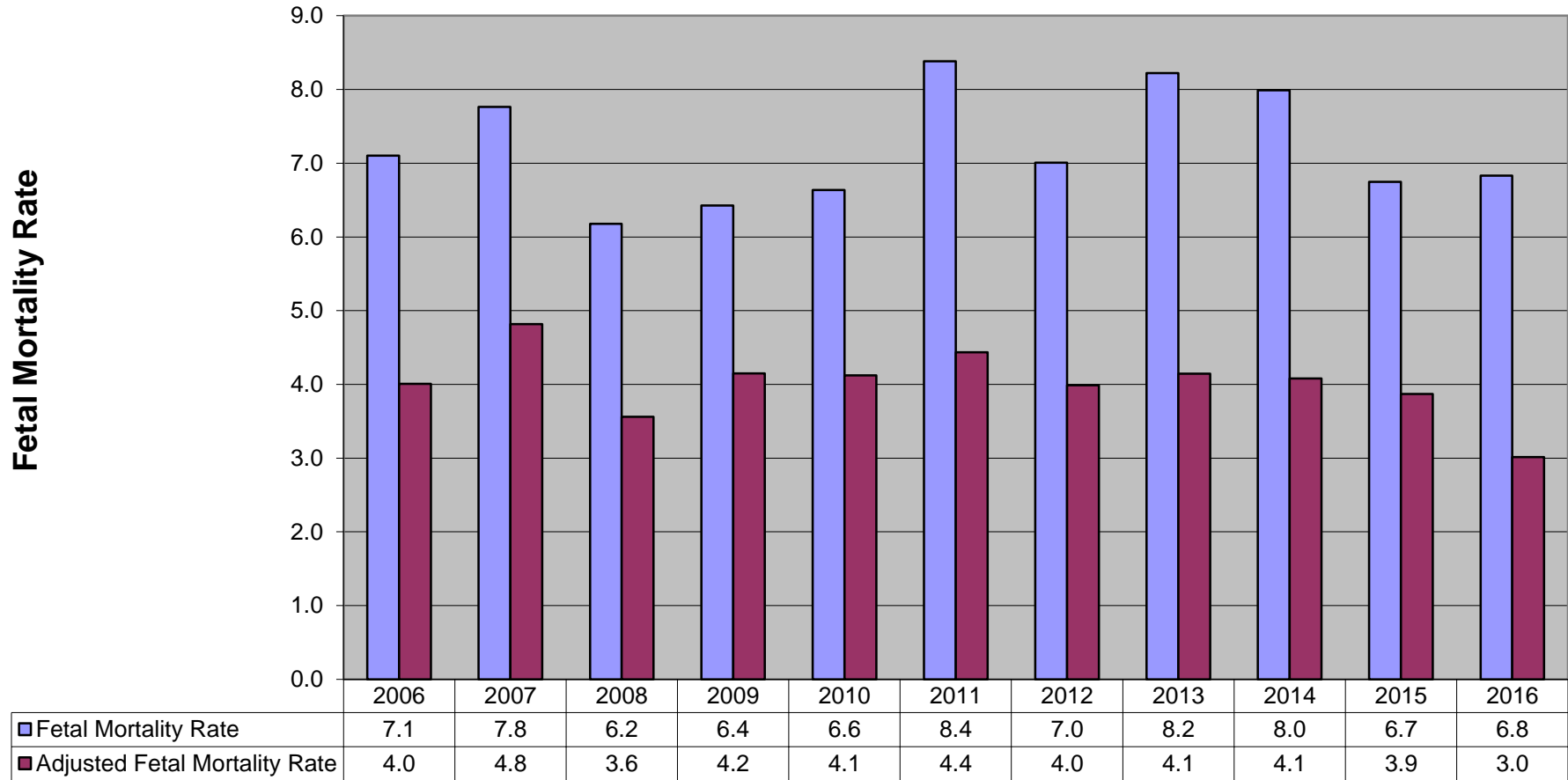
Very Low Birth Weight (VLBW) Mortality Percent = (VLBW Deaths / VLBW Live Births) x 100

**VERY LOW BIRTH WEIGHT NEONATAL MORTALITY PERCENT BY BIRTH WEIGHT
2006-2016
Regional Perinatal Database
Cincinnati Children's Perinatal Outreach Program**



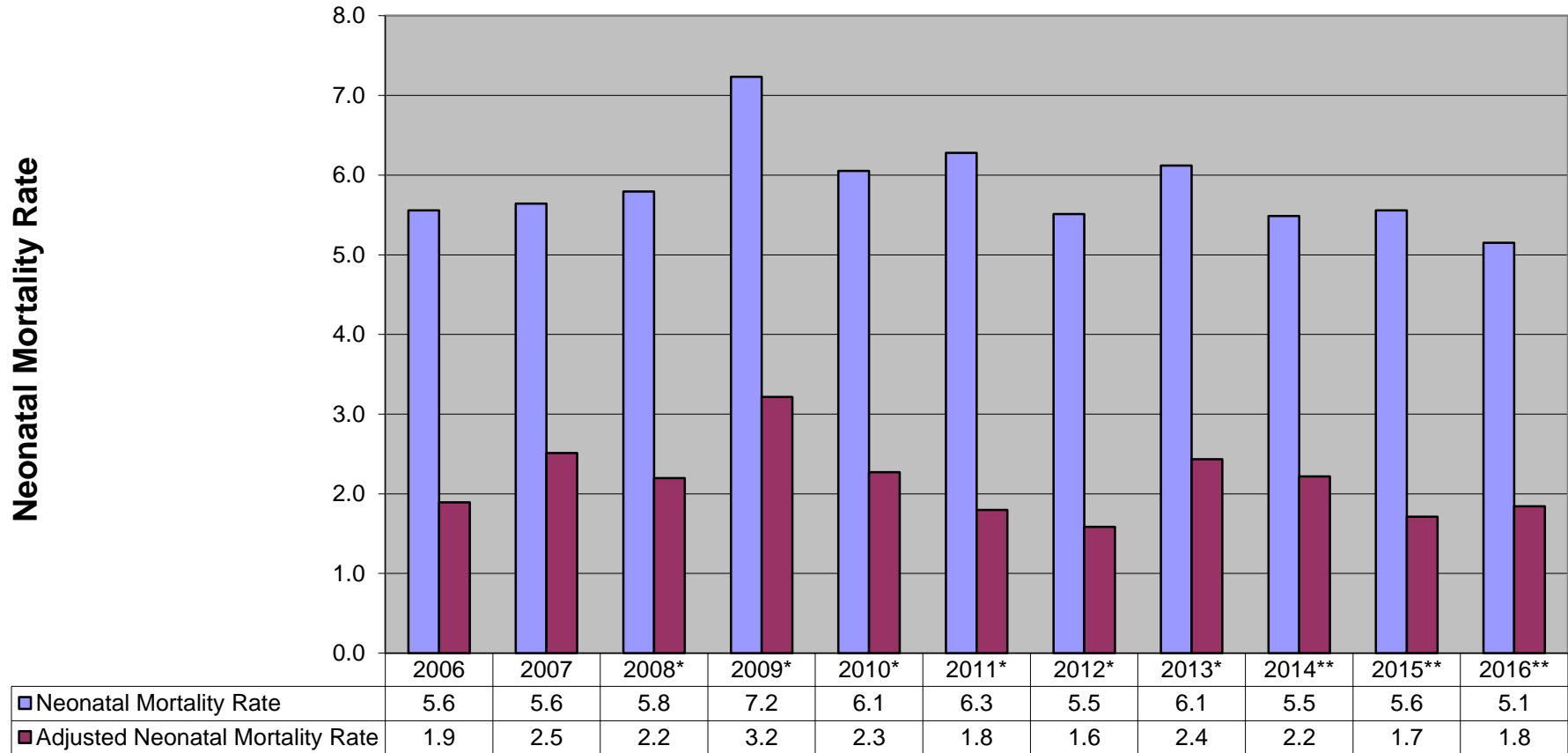
Very Low Birth Weight (VLBW) Mortality Percent = (VLBW Deaths / VLBW Live Births) x 100

**REGIONAL FETAL MORTALITY RATES
2006-2016**
Regional Perinatal Database
Cincinnati Children's Perinatal Outreach Program



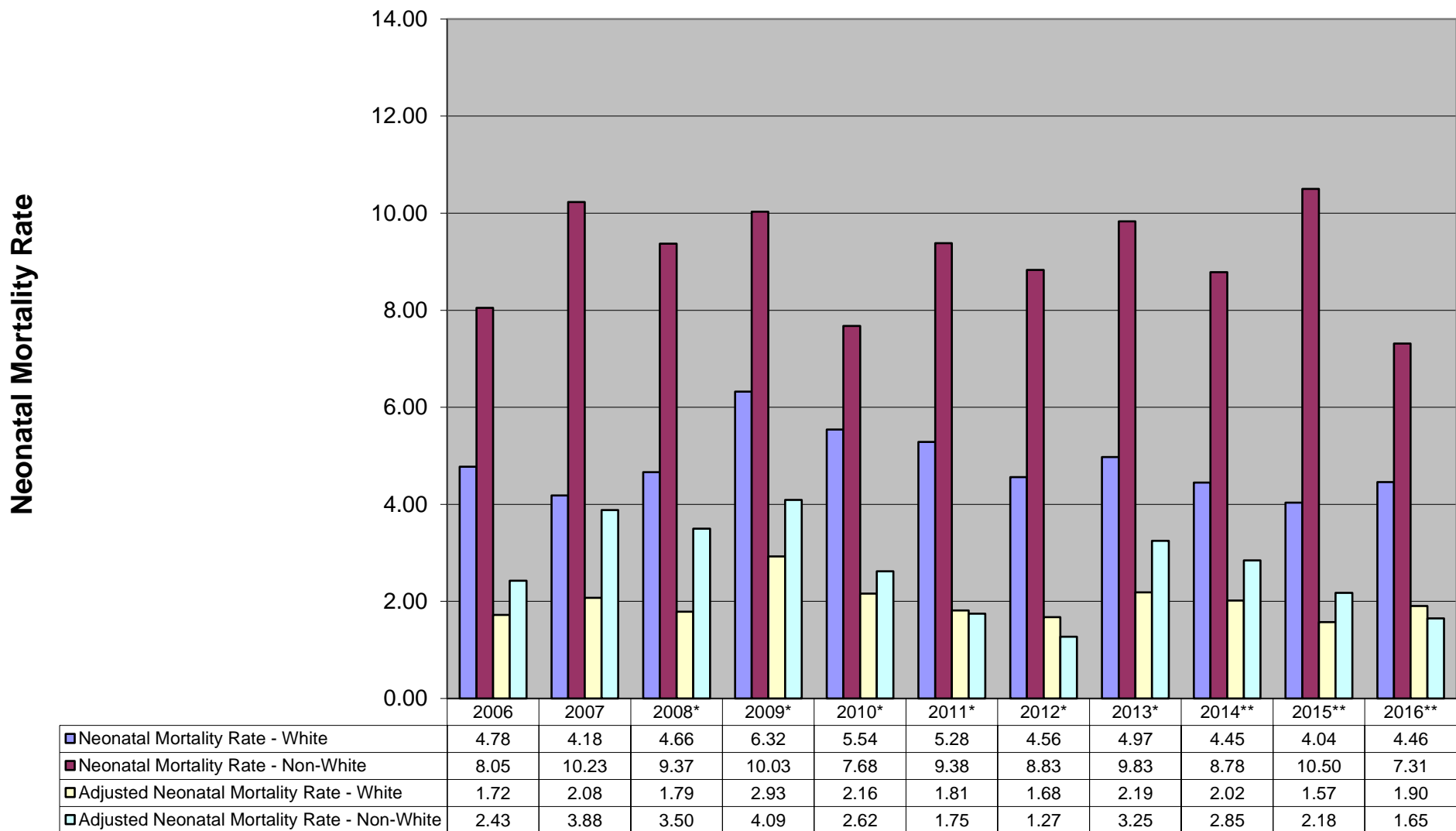
Fetal Mortality Rate = (Fetal Deaths / (Total Live Births + Fetal Deaths)) x 1000
Adjusted Fetal Mortality Rate - for Extreme Low Birth Weight (<500 grams)

**REGIONAL NEONATAL MORTALITY RATES
2006-2016**
Regional Perinatal Database
Cincinnati Children's Perinatal Outreach Program



Neonatal Mortality Rate = (Neonatal Deaths / Live Births) x 1000
Adjusted Neonatal Mortality Rate - for Lethal Malformations, Extreme Low Birth Weight (<500 grams),
and * < 24 Completed Weeks Gestation or ** < 23 Completed Weeks Gestation)

REGIONAL NEONATAL MORTALITY RATES 2006-2016 BY RACE
 Regional Perinatal Database
 Cincinnati Children's Perinatal Outreach Program

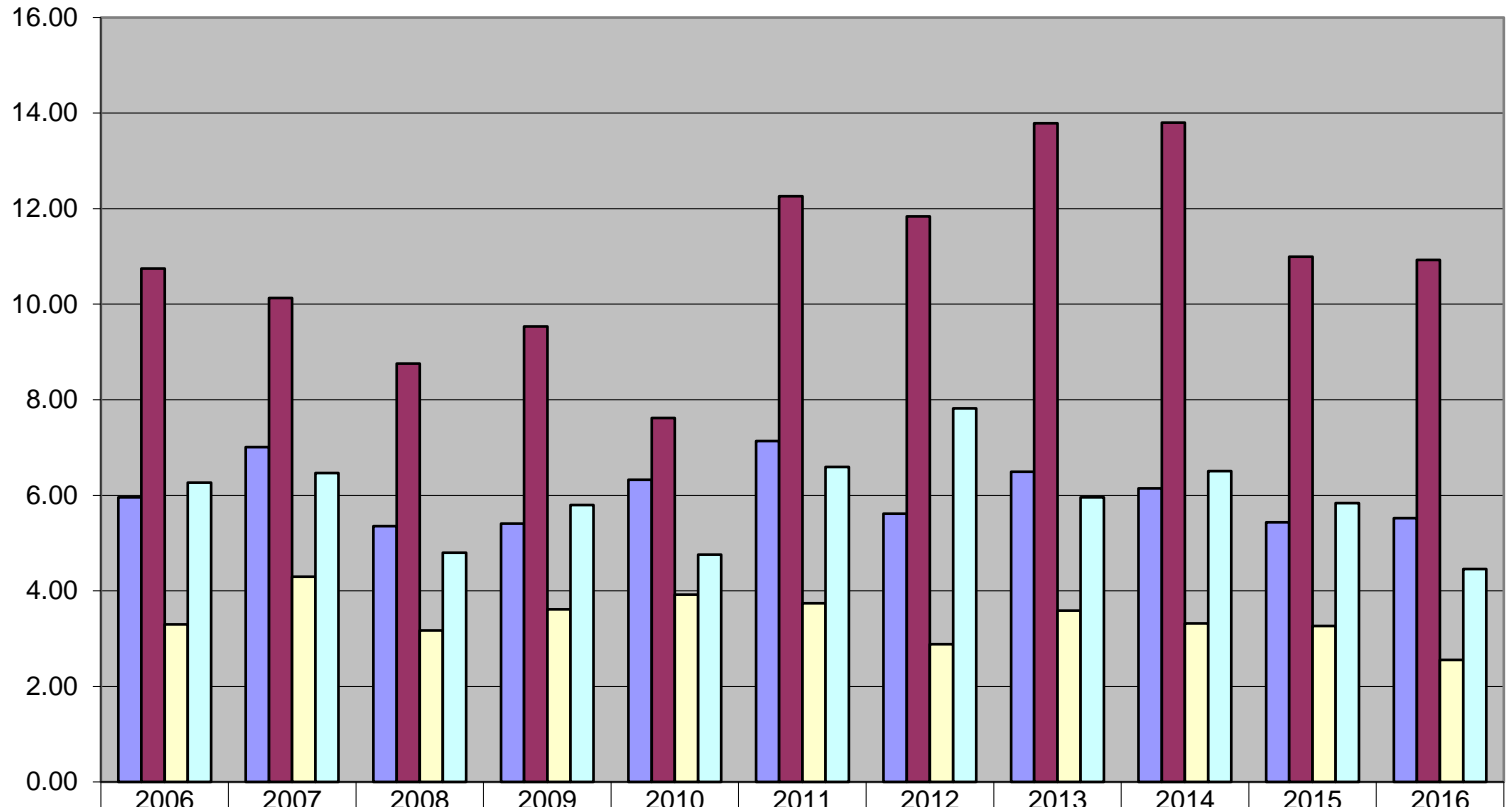


Neonatal Mortality Rate = (Neonatal Deaths / Live Births) x 1000
Adjusted Neonatal Mortality Rate - for Lethal Malformations, Extreme Low Birth Weight (<500 grams),
and * < 24 Completed Weeks Gestation or ** < 23 Completed Weeks Gestation



REGIONAL FETAL MORTALITY RATES 2006-2016 BY RACE
Regional Perinatal Database
Cincinnati Children's Perinatal Outreach Program

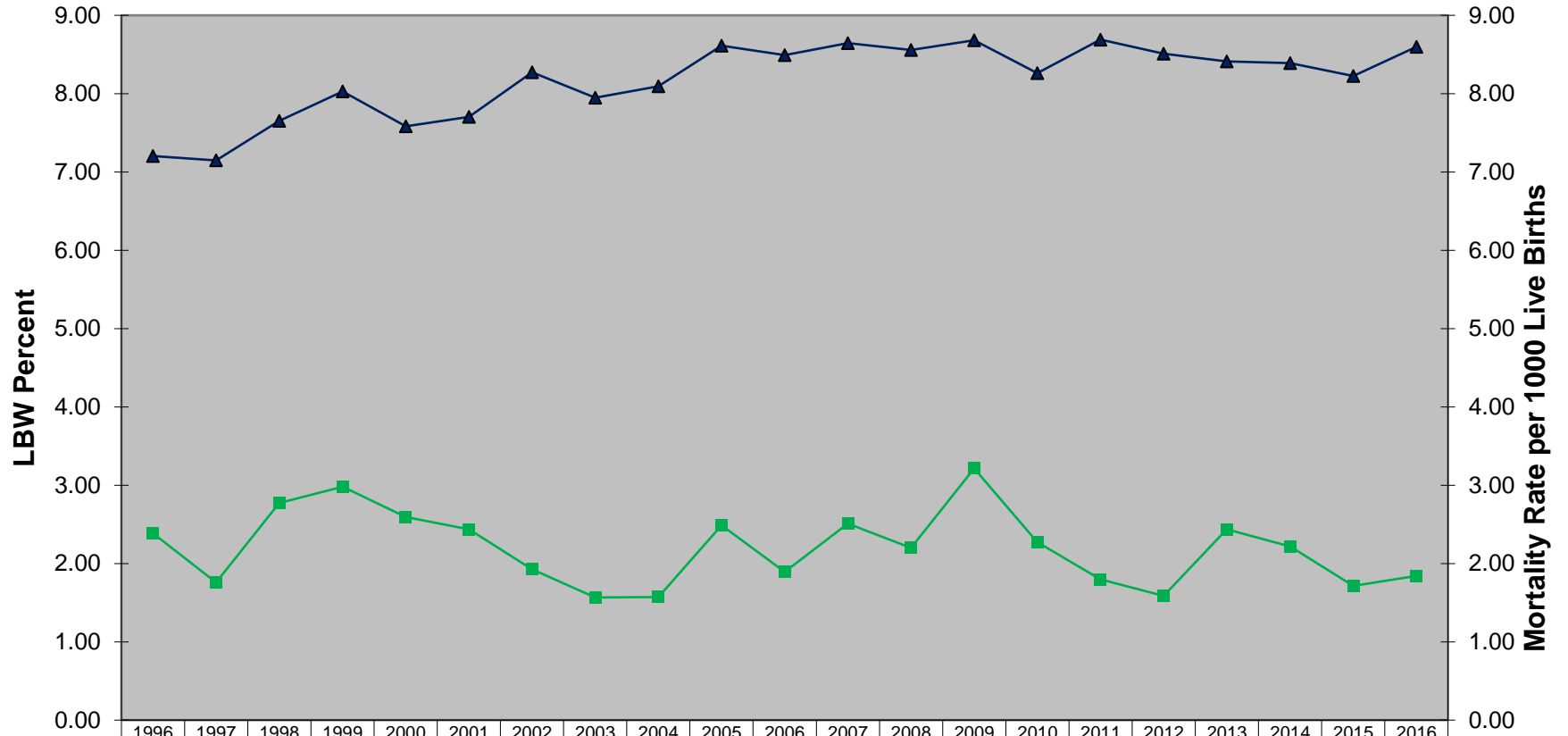
Fetal Mortality Rate



| | | | | | | | | | | | |
|------------------------------------|-------|-------|------|------|------|-------|-------|-------|-------|-------|-------|
| ■ Fetal Death - White | 5.96 | 7.01 | 5.36 | 5.41 | 6.33 | 7.13 | 5.61 | 6.49 | 6.15 | 5.43 | 5.52 |
| ■ Fetal Death - Non-White | 10.75 | 10.13 | 8.76 | 9.53 | 7.62 | 12.26 | 11.84 | 13.79 | 13.80 | 10.99 | 10.93 |
| ■ Adjusted Fetal Death - White | 3.30 | 4.29 | 3.17 | 3.61 | 3.92 | 3.74 | 2.88 | 3.59 | 3.32 | 3.27 | 2.56 |
| ■ Adjusted Fetal Death - Non-White | 6.26 | 6.47 | 4.80 | 5.79 | 4.76 | 6.59 | 7.82 | 5.96 | 6.51 | 5.83 | 4.46 |

Fetal Mortality Rate = (Fetal Deaths / (Total Live Births + Fetal Deaths)) x 1000
Adjusted Fetal Mortality Rate - for Extreme Low Birth Weight (<500 grams)

REGIONAL LOW BIRTH WEIGHT & ADJUSTED NEONATAL MORTALITY RATES 1996-2016



| | 1996 | 1997 | 1998 | 1999 | 2000 | 2001 | 2002 | 2003 | 2004 | 2005 | 2006 | 2007 | 2008 | 2009 | 2010 | 2011 | 2012 | 2013 | 2014 | 2015 | 2016 |
|----------------------------------|------|------|------|------|------|------|------|------|------|------|------|------|------|------|------|------|------|------|------|------|------|
| Neonatal Deaths | 111 | 99 | 136 | 158 | 126 | 133 | 140 | 134 | 152 | 184 | 174 | 176 | 180 | 217 | 174 | 179 | 157 | 169 | 154 | 153 | 143 |
| Live Births (0-2500 gms) | 1814 | 1874 | 2075 | 2269 | 2313 | 2313 | 2456 | 2394 | 2484 | 2642 | 2659 | 2696 | 2657 | 2604 | 2374 | 2477 | 2424 | 2323 | 2354 | 2265 | 2388 |
| Low Birth Weight | 7.20 | 7.15 | 7.65 | 8.03 | 7.58 | 7.70 | 8.27 | 7.95 | 8.10 | 8.61 | 8.49 | 8.64 | 8.56 | 8.68 | 8.26 | 8.69 | 8.51 | 8.41 | 8.39 | 8.23 | 8.60 |
| Adjusted Neonatal Mortality Rate | 2.39 | 1.76 | 2.77 | 2.98 | 2.59 | 2.44 | 1.93 | 1.57 | 1.57 | 2.49 | 1.89 | 2.51 | 2.20 | 3.21 | 2.27 | 1.80 | 1.59 | 2.44 | 2.22 | 1.71 | 1.84 |

▲ Low Birth Weight ■ Adjusted Neonatal Mortality Rate